

Program Overview and Pre-trip Information  
*Cultural History School Programs — Kindergarten and Grade 1*

## ONCE UPON A FARM

In *Once Upon A Farm*, young children are introduced to farmstead life of the early 1800s in this program, the first in a series about the Pennsylvania German culture of our region.

Students learn that people of the past needed food, clothing and shelter, as well as a little fun—just like today!

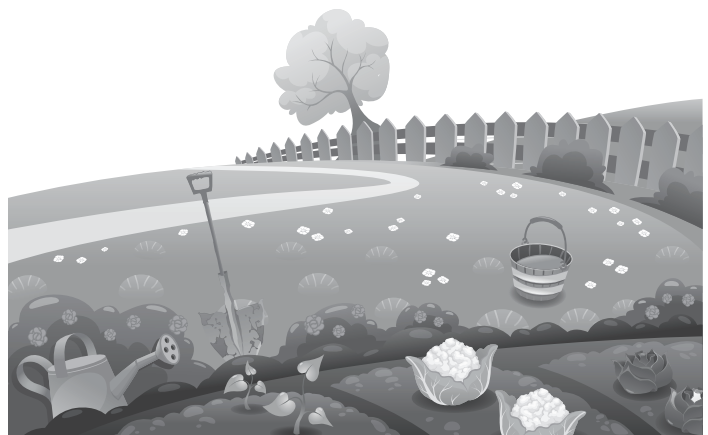
An instructor dressed in period clothing greets the children. After an introduction in a historic building on the property, the class moves to the yard of the Royer or Fahnstock farmhouse. There they participate in a variety of hands-on activities, such as Pennsylvania German dress-up, sewing, and a chore and game station.

Throughout the program the children learn nursery rhymes, which connect them to the activity at hand. The experience concludes with a story about a little girl and her favorite quilt.

We will also supply a vocabulary list, and may include links to YouTube videos, which you may find helpful as you prepare for your trip.

**Please bring 3 to 4 adult helpers in addition to the classroom teacher.**

*Funding for Once Upon A Farm is provided in part through grants from Peggy McCleary, William & Diane Nitterhouse Foundation, and Pat Heefner, in memory of Jean Foster.*





THE  
INSTITUTE  
AT RENFREW

EDUCATE • INSPIRE • UNITE

---

## ONCE UPON A FARM

# Vocabulary

**Basic needs** - food, water, shelter, clothing, fun

**Chores** - jobs, work

**Clothing** - shift, nightgown, skirt, apron, scarf, pants, shirt, handkerchief, work apron

**Pennsylvania Germans** - people with at least one family member who emigrated to this country from the Rhineland of Germany, France and Switzerland during the 1600s-1700s

**Pennsylvania German Farmstead** - everything involved in making up a farm, including people, animals, buildings, and landscape

**Quilt** - a blanket with three layers

**Quilting** - sewing the three layers of the blanket together

**Stitch** - sewing

**Yarn** - spun thread used for knitting, crocheting, weaving, or sewing